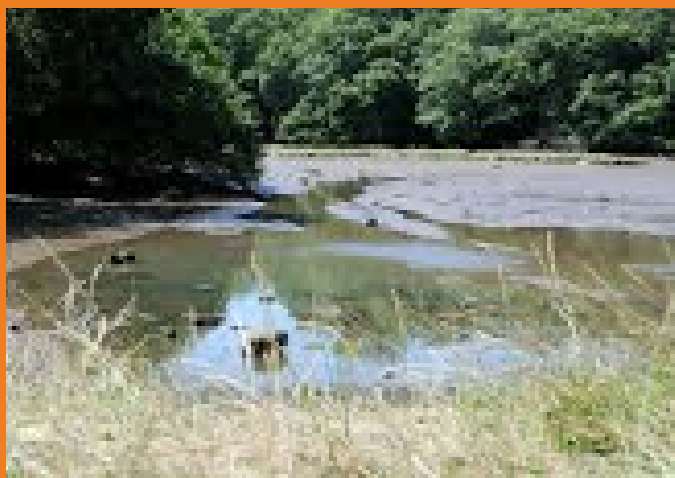


Find woodland near you!

Efford Marsh

Located in Efford, this nature reserve offers a relaxing place to walk, play and explore including meadows, woodlands and marshland of the river Plym.



Ham Woods

Situated in a steep valley, Ham Woods is the size of over 35-football pitches of open space. Over 200 species of plants and 80 species of birds have been recorded here.



Forder Valley

Situated near Estover and Egguckland, Forder Valley is a beautiful open nature reserve. Great for pond dipping in springtime, picnics and offers natural play features.